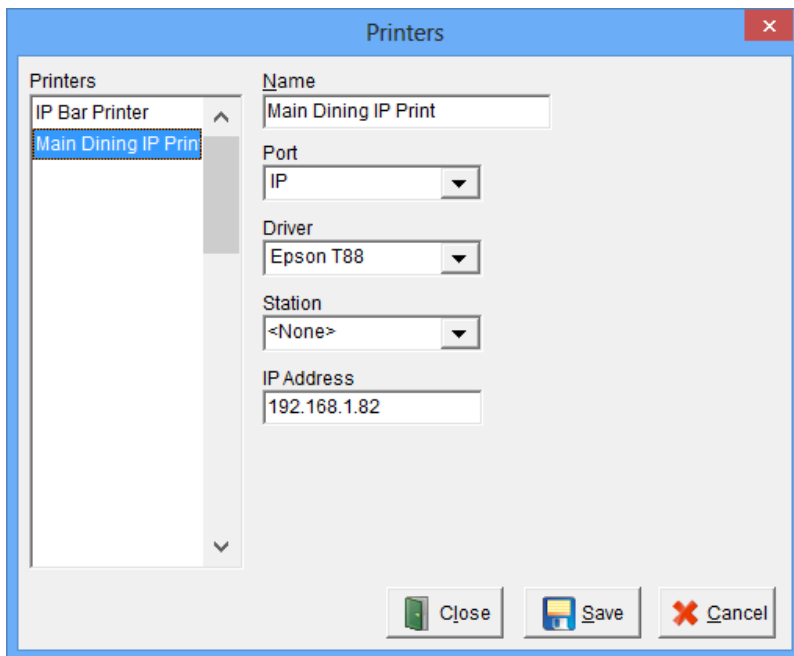


IP Printer Setup

In Focus POS, IP printers can be configured to print guest checks and credit card vouchers. This article outlines how to configure local printers.

Navigate to Printers > Printers



18.2.IP

Setup IP Printer

1. Enter a name for the IP printer.
2. Select IP for Port.
3. Select appropriate Driver.
4. Set Station to <None>.
5. Enter the IP Address in the IP Address field.



For information on how to view or change the printers IP address consult the printer manual.

Navigate to Locations > Stations

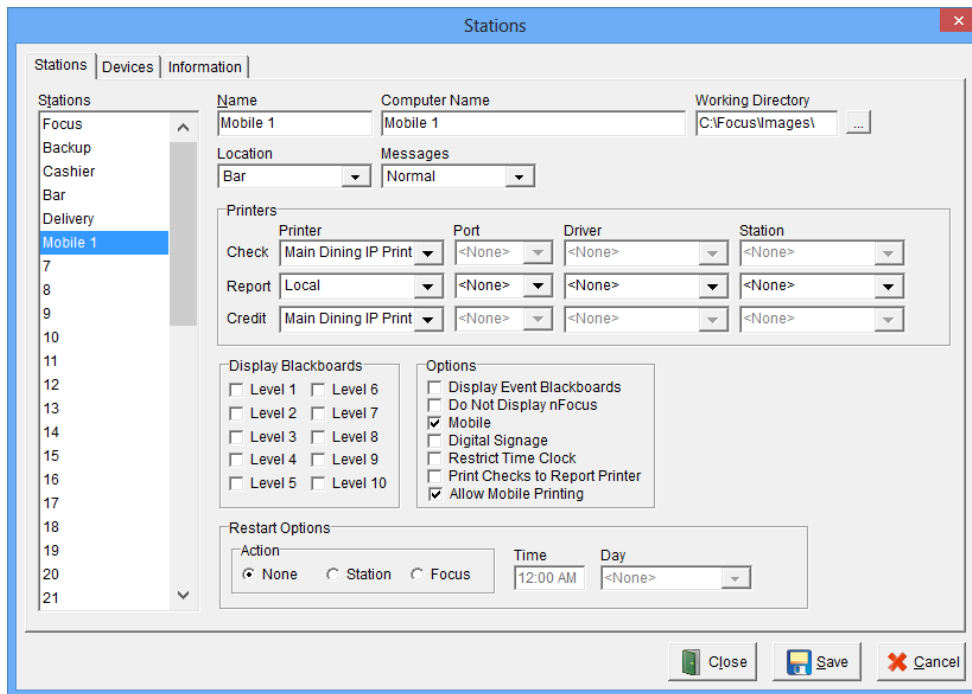



Image 18.1.IP

Local Check Printer Configuration:


1. Select a Station you would like to edit from the list on the left.
2. For Printer, select the IP Printer setup in Printers > Printers above.
3. Under 'Options' select 'Allow Mobile Printing' if you want this printer available for Mobile printing.
4. Select Save and restart Focus on all stations.

Local Report Printer Configuration:

 IP Printing is not available for report Printing from Mobile Devices.

Local Check Printer Configuration:

1. Select a Station you would like to edit from the list on the left.
2. For Printer, select the IP Printer setup in Printers > Printers above.
3. Under 'Options' select 'Allow Mobile Printing' if you want this printer available for Mobile printing.
4. Select Save and restart Focus on all stations.

 For information on how to view or change the printers IP address consult the printer manual.